

# \$725,000 - 38 Kingsbury Crescent, St. Albert

MLS® #E4429428

**\$725,000**

7 Bedroom, 3.00 Bathroom, 2,702 sqft

Single Family on 0.00 Acres

Kingswood, St. Albert, AB

Welcome to this property featuring more than 2700 sqft with a walkout basement and a large triple attached garage in the esteemed Kingswood neighbourhood of St. Albert. This 1 1/2 story home features 7 bedrooms and 3 complete baths. The property is in original condition and is sold on as is, where is basis.

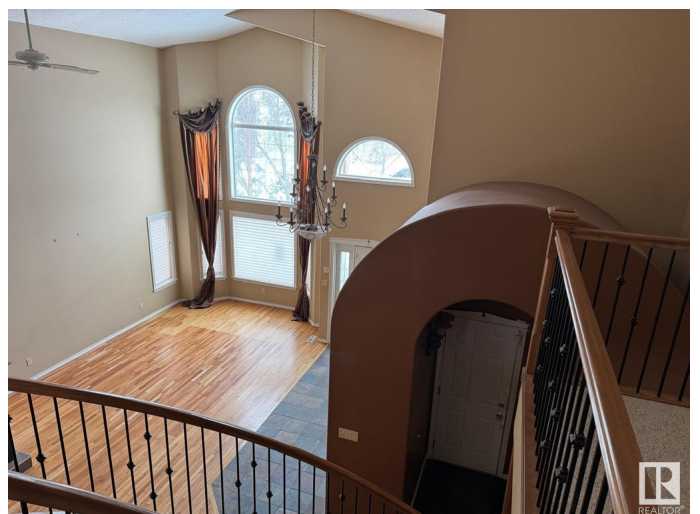
Built in 1999

## Essential Information

MLS® #	E4429428
Price	\$725,000
Bedrooms	7
Bathrooms	3.00
Full Baths	3
Square Footage	2,702
Acres	0.00
Year Built	1999
Type	Single Family
Sub-Type	Detached Single Family
Style	2 Storey
Status	Active

## Community Information

Address	38 Kingsbury Crescent
Area	St. Albert
Subdivision	Kingswood



City	St. Albert
County	ALBERTA
Province	AB
Postal Code	T8N 6W6

### **Amenities**

Amenities	See Remarks
Parking	Triple Garage Attached

### **Interior**

Interior Features	ensuite bathroom
Appliances	None
Heating	Forced Air-2, Natural Gas
Stories	3
Has Basement	Yes
Basement	Full, Finished

### **Exterior**

Exterior	Wood, Stucco
Exterior Features	See Remarks
Roof	Cedar Shakes
Construction	Wood, Stucco
Foundation	Concrete Perimeter

### **Additional Information**

Date Listed	April 5th, 2025
Days on Market	18
Zoning	Zone 24
RE / Bank Owned	Yes

DATA IS DEEMED RELIABLE BUT IS NOT GUARANTEED ACCURATE BY THE REALTORS® ASSOCIATION OF EDMONTON. COPYRIGHT 2025 BY THE REALTORS® ASSOCIATION OF EDMONTON. ALL RIGHTS RESERVED. Trademarks are owned or controlled by the Canadian Real Estate Association (CREA) and identify real estate professionals who are members of CREA (REALTOR®, REALTORS®) and/or the quality of services they provide (MLS®, Multiple Listing Service®)

Listing information last updated on April 23rd, 2025 at 6:17pm MDT