

\$339,900 - 2908 26 Street, Edmonton

MLS® #E4429336

\$339,900

2 Bedroom, 2.50 Bathroom, 1,077 sqft

Single Family on 0.00 Acres

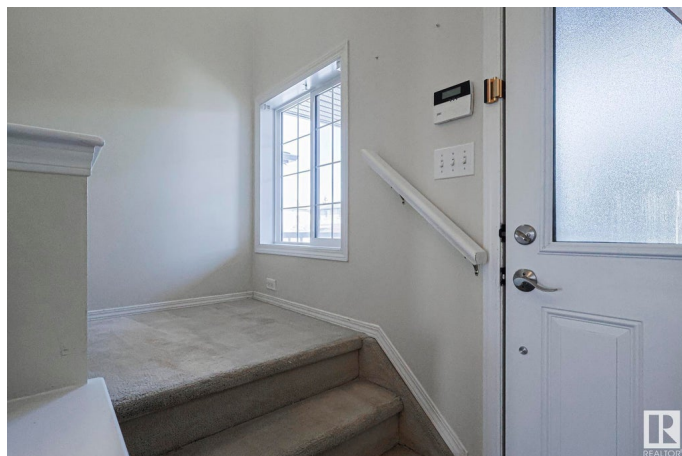
Silver Berry, Edmonton, AB

MOVE-IN-READY and NO CONDO FEES in Silverberry! This 2-storey half-duplex has over 1500+ sqft of living space, with 2 ample bedrooms, two full 4-piece bathrooms upstairs, and another 2-piece bathroom on the main floor. The kitchen and main living area is bright and open, and includes an island for additional counterspace. Enjoy the natural light from the large main floor windows and the west facing backyard. Notice the privacy on both of the outdoor decks, as it backs on to lovely greenspace off Silverberry Park. It includes a single attached garage and is minutes away from shopping, schools, public transit and the Meadows Recreation Center. Make this home yours today!

Built in 2004

Essential Information

MLS® #	E4429336
Price	\$339,900
Bedrooms	2
Bathrooms	2.50
Full Baths	2
Half Baths	1
Square Footage	1,077
Acres	0.00
Year Built	2004



Type	Single Family
Sub-Type	Half Duplex
Style	2 Storey
Status	Active

Community Information

Address	2908 26 Street
Area	Edmonton
Subdivision	Silver Berry
City	Edmonton
County	ALBERTA
Province	AB
Postal Code	T6T 2A2

Amenities

Amenities	On Street Parking, Deck, Front Porch, No Smoking Home, Vinyl Windows
Parking Spaces	2
Parking	Single Garage Attached

Interior

Interior Features	ensuite bathroom
Appliances	Dishwasher-Built-In, Dryer, Garage Control, Garage Opener, Oven-Microwave, Refrigerator, Stove-Electric, Vacuum System Attachments, Vacuum Systems, Washer, Window Coverings
Heating	Forced Air-1, Natural Gas
Fireplace	Yes
Fireplaces	Tile Surround
Stories	2
Has Basement	Yes
Basement	Full, Unfinished

Exterior

Exterior	Wood, Vinyl
Exterior Features	Backs Onto Park/Trees, Fenced, No Back Lane, Playground Nearby, Public Swimming Pool, Public Transportation, Schools, Shopping Nearby
Roof	Asphalt Shingles
Construction	Wood, Vinyl
Foundation	Concrete Perimeter

Additional Information

Date Listed April 5th, 2025
Days on Market 16
Zoning Zone 30

DATA IS DEEMED RELIABLE BUT IS NOT GUARANTEED ACCURATE BY THE REALTORS® ASSOCIATION OF EDMONTON. COPYRIGHT 2025 BY THE REALTORS® ASSOCIATION OF EDMONTON. ALL RIGHTS RESERVED.Trademarks are owned or controlled by the Canadian Real Estate Association (CREA) and identify real estate professionals who are members of CREA (REALTOR®, REALTORS®) and/or the quality of services they provide (MLS®, Multiple Listing Service®)
Listing information last updated on April 21st, 2025 at 6:17pm MDT