

Courtesy Of Christina A Reid Of Century 21 Leading

\$514,939 - 2165 Muckleplum Crescent, Edmonton

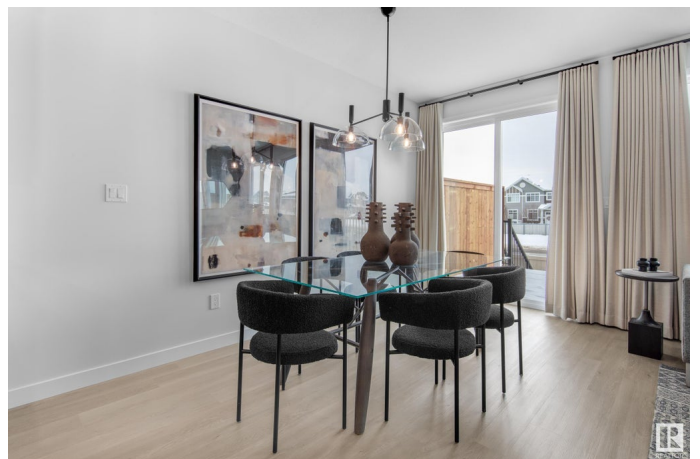
MLS® #E4428880

\$514,939

3 Bedroom, 2.50 Bathroom, 1,724 sqft
Single Family on 0.00 Acres

The Orchards At Ellerslie, Edmonton, AB

We are pleased to introduce The MacKay—an exceptional home that embodies style, functionality, and modern design. This home boasts a total of 1,725 square feet of meticulously designed living space located in the highly desirable Southeast community of The Orchards. The home showcases designer-selected finishes that seamlessly combine elegance and practicality. Upon entering, you will be greeted by 9-foot ceilings and exquisite luxury vinyl plank flooring that extends throughout the dining, living, and kitchen areas. The kitchen is equipped with a beautiful stainless-steel appliances, 3CM quartz countertops and is complemented by an abundance of natural light from large triple-pane windows. As you ascend the staircase, you will be greeted by a spacious bonus room, an upgraded tiled shower in the main bath, dual sinks in the ensuite, and a laundry area that includes appliances. Furthermore, this residence is situated on a 22-pocket lot, providing an ample yard space. Photos of showhome



Built in 2024

Essential Information

MLS® #	E4428880
Price	\$514,939

Bedrooms	3
Bathrooms	2.50
Full Baths	2
Half Baths	1
Square Footage	1,724
Acres	0.00
Year Built	2024
Type	Single Family
Sub-Type	Half Duplex
Style	2 Storey
Status	Active

Community Information

Address	2165 Muckleplum Crescent
Area	Edmonton
Subdivision	The Orchards At Ellerslie
City	Edmonton
County	ALBERTA
Province	AB
Postal Code	T6X 3G9

Amenities

Amenities	Carbon Monoxide Detectors, Ceiling 9 ft., Detectors Smoke, Smart/Program. Thermostat, HRV System
Parking	Double Garage Attached

Interior

Interior Features	ensuite bathroom
Appliances	Dishwasher-Built-In, Garage Control, Garage Opener, Refrigerator, Stacked Washer/Dryer, Stove-Gas
Heating	Forced Air-1, Natural Gas
Stories	2
Has Basement	Yes
Basement	Full, Unfinished

Exterior

Exterior	Wood, Vinyl
Exterior Features	Airport Nearby, Partially Landscaped, Playground Nearby, Public Transportation, Schools, Shopping Nearby

Roof	Asphalt Shingles
Construction	Wood, Vinyl
Foundation	Concrete Perimeter

School Information

Elementary	Divine Mercy
Middle	KISĂŠWĂ,TISIWIN
High	Holy Trinity

Additional Information

Date Listed	April 3rd, 2025
Days on Market	8
Zoning	Zone 53
HOA Fees	450
HOA Fees Freq.	Annually

DATA IS DEEMED RELIABLE BUT IS NOT GUARANTEED ACCURATE BY THE REALTORSÂ® ASSOCIATION OF EDMONTON. COPYRIGHT 2025 BY THE REALTORSÂ® ASSOCIATION OF EDMONTON. ALL RIGHTS RESERVED.Trademarks are owned or controlled by the Canadian Real Estate Association (CREA) and identify real estate professionals who are members of CREA (REALTORÂ®, REALTORSÂ®) and/or the quality of services they provide (MLSÂ®, Multiple Listing ServiceÂ®)

Listing information last updated on April 11th, 2025 at 2:47pm MDT