

\$229,900 - 5510 145 Avenue, Edmonton

MLS® #E4428672

\$229,900

3 Bedroom, 1.50 Bathroom, 1,179 sqft
Condo / Townhouse on 0.00 Acres

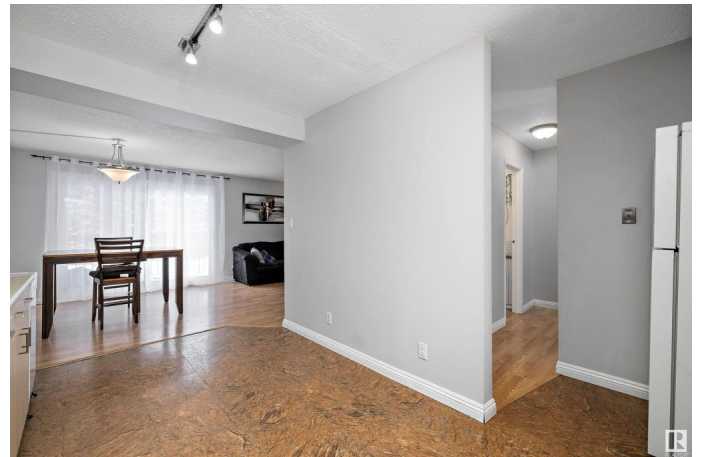
Casselman, Edmonton, AB

Welcome home to this beautiful updated 3 bedroom, 2 bathroom townhouse located in the well-managed complex of Steele Heights condo. Offering the perfect mix of comfort and convenience with low monthly condo fees. It is a fantastic opportunity for both families and investors! Step inside the spacious home to a bright and open space, well-appointed updated kitchen with plenty of storage, three good size bedrooms and two renovated bathrooms. Need more space? The partially finished basement is perfect for a family room, home office or gym, it awaits your final touch! The massive fenced yard provides the perfect setting for outdoor entertaining, gardening, BBQ or just relaxing. Located in the quiet and close-knit community of Casselman, close to shopping, dining, schools and transit. Don't miss out on this move-in-ready home!

Built in 1977

Essential Information

| | |
|----------------|-----------|
| MLS® # | E4428672 |
| Price | \$229,900 |
| Bedrooms | 3 |
| Bathrooms | 1.50 |
| Full Baths | 1 |
| Half Baths | 1 |
| Square Footage | 1,179 |



| | |
|------------|-------------------|
| Acres | 0.00 |
| Year Built | 1977 |
| Type | Condo / Townhouse |
| Sub-Type | Townhouse |
| Style | 2 Storey |
| Status | Active |

Community Information

| | |
|-------------|-----------------|
| Address | 5510 145 Avenue |
| Area | Edmonton |
| Subdivision | Casselman |
| City | Edmonton |
| County | ALBERTA |
| Province | AB |
| Postal Code | T5A 3R3 |

Amenities

| | |
|-----------|------------------------------------|
| Amenities | Closet Organizers, No Smoking Home |
| Parking | Stall |

Interior

| | |
|--------------|--|
| Appliances | Dishwasher-Portable, Dryer, Microwave Hood Fan, Refrigerator, Stove-Electric, Washer |
| Heating | Forced Air-1, Natural Gas |
| Stories | 2 |
| Has Basement | Yes |
| Basement | Full, Partially Finished |

Exterior

| | |
|-------------------|--|
| Exterior | Wood, Vinyl |
| Exterior Features | Fenced, Landscaped, Playground Nearby, Public Transportation, Schools, Shopping Nearby |
| Roof | Asphalt Shingles |
| Construction | Wood, Vinyl |
| Foundation | Concrete Perimeter |

Additional Information

| | |
|----------------|-----------------|
| Date Listed | April 2nd, 2025 |
| Days on Market | 2 |

| | |
|-----------|---------|
| Zoning | Zone 02 |
| Condo Fee | \$355 |

DATA IS DEEMED RELIABLE BUT IS NOT GUARANTEED ACCURATE BY THE REALTORS® ASSOCIATION OF EDMONTON. COPYRIGHT 2025 BY THE REALTORS® ASSOCIATION OF EDMONTON. ALL RIGHTS RESERVED. Trademarks are owned or controlled by the Canadian Real Estate Association (CREA) and identify real estate professionals who are members of CREA (REALTOR®, REALTORS®) and/or the quality of services they provide (MLS®, Multiple Listing Service®)

Listing information last updated on April 4th, 2025 at 10:03am MDT