

## \$139,900 - 106 111 Edwards Drive, Edmonton

MLS® #E4424772

**\$139,900**

1 Bedroom, 1.00 Bathroom, 636 sqft

Condo / Townhouse on 0.00 Acres

Ellerslie, Edmonton, AB

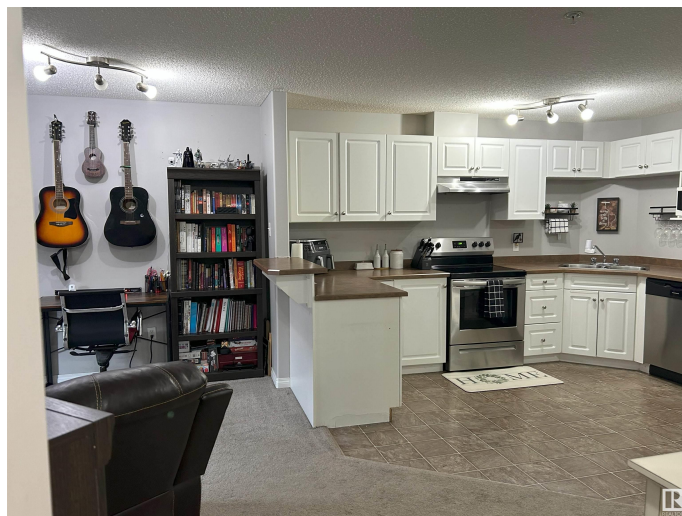
**VERY WELL MAINTAINED, COMFORTABLE AND CONVENIENT! 1 TITLED Parking Stall!**

Very open, clean and cozy impressive Unit, situated at a quiet end of the hall with quick access to the exterior if you have a pet or want to go for a walk. Shows pride of ownership! Enjoy the open and large kitchen, the private patio for fresh air and your own titled parking right outside the main door! Extremely good-sized Social Room to utilize for larger get togethers and a Huge Bonus of a "Pet Area" on the exterior for that furry family member, if needed. Extra Bonus of 2 nice-quality vending machines with drinks & snacks in the lobby right by the social room to treat yourself and your guests! Access is fantastic to commuter routes such as Ellerslie Rd., Calgary Trail, 50th St, the Henday and more. Great visitor parking close to the main doors also. Unbeatable price to move in and call it your own or as a great investment to rent out!!

Built in 2006

### Essential Information

MLS® #	E4424772
Price	\$139,900
Bedrooms	1
Bathrooms	1.00
Full Baths	1



Square Footage	636
Acres	0.00
Year Built	2006
Type	Condo / Townhouse
Sub-Type	Lowrise Apartment
Style	Single Level Apartment
Status	Active

### Community Information

Address	106 111 Edwards Drive
Area	Edmonton
Subdivision	Ellerslie
City	Edmonton
County	ALBERTA
Province	AB
Postal Code	T6X 0C4

### Amenities

Amenities	Parking-Visitor, Party Room, Security Door
Parking	Stall

### Interior

Appliances	Dishwasher-Built-In, Dryer, Oven-Microwave, Refrigerator, Stove-Electric, Washer, Window Coverings
Heating	Hot Water, Natural Gas
# of Stories	4
Stories	1
Has Basement	Yes
Basement	None, No Basement

### Exterior

Exterior	Wood, Vinyl
Exterior Features	Public Transportation, Shopping Nearby
Roof	Asphalt Shingles
Construction	Wood, Vinyl
Foundation	Concrete Perimeter

### Additional Information

Date Listed	March 8th, 2025
-------------	-----------------

Days on Market	42
Zoning	Zone 53
Condo Fee	\$341

DATA IS DEEMED RELIABLE BUT IS NOT GUARANTEED ACCURATE BY THE REALTORS® ASSOCIATION OF EDMONTON. COPYRIGHT 2025 BY THE REALTORS® ASSOCIATION OF EDMONTON. ALL RIGHTS RESERVED. Trademarks are owned or controlled by the Canadian Real Estate Association (CREA) and identify real estate professionals who are members of CREA (REALTOR®, REALTORS®) and/or the quality of services they provide (MLS®, Multiple Listing Service®)

Listing information last updated on April 18th, 2025 at 11:02pm MDT