

\$189,900 - 502 164 Bridgeport Boulevard, Leduc

MLS® #E4424387

\$189,900

2 Bedroom, 1.00 Bathroom, 1,111 sqft
Condo / Townhouse on 0.00 Acres

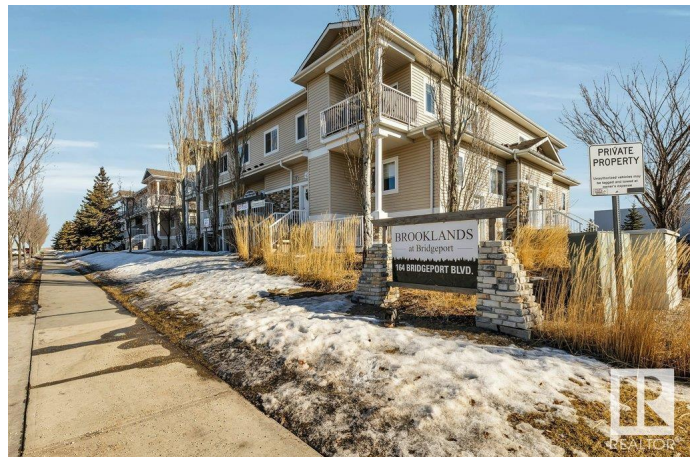
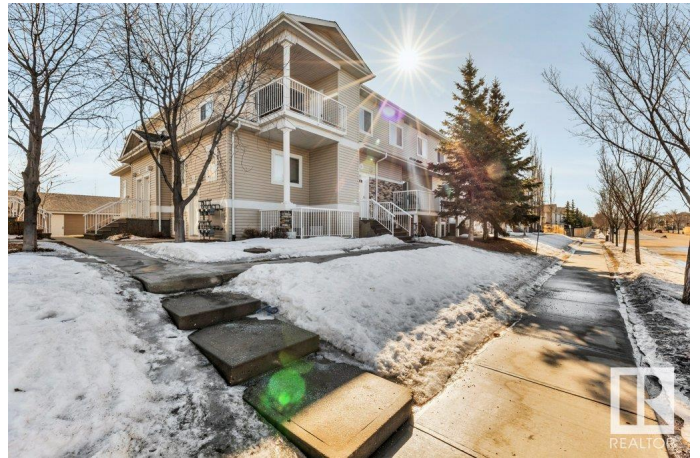
Bridgeport, Leduc, AB

Welcome to Bridgeport! This spacious stacked condo unit, offering over 1,111+ sq. ft. of living space, is the perfect opportunity for first-time homebuyers or savvy investors looking to enter or expand their real estate portfolio. Featuring 2 well-sized bedrooms and a full bathroom, this home boasts an open-concept layout that maximizes space and functionality. The large living room and dining area provide ample space for entertaining or relaxing, while the L-shaped kitchen is ideal for preparing meals and enjoying time at home. Conveniently located just steps away from Leduc Common, you'll have easy access to an array of restaurants, shopping, and amenities. Quick connections to Highway 2 & proximity to the Edmonton International Airport! Whether you're looking for your first home or a rental property with strong potential, this condo has it all! Newer Appliances! WASHER & DRYER 2024. FRIDGE -2023. DISHWASHER & STOVE WILL BE BRAND NEW. Seller is offering a new Microwave 2024!

Built in 2007

Essential Information

MLS® #	E4424387
Price	\$189,900
Bedrooms	2



Bathrooms	1.00
Full Baths	1
Square Footage	1,111
Acres	0.00
Year Built	2007
Type	Condo / Townhouse
Sub-Type	Carriage
Style	Bungalow
Status	Active

Community Information

Address	502 164 Bridgeport Boulevard
Area	Leduc
Subdivision	Bridgeport
City	Leduc
County	ALBERTA
Province	AB
Postal Code	T9E 0L3

Amenities

Amenities	Patio
Parking Spaces	1
Parking	Stall

Interior

Appliances	Dishwasher-Built-In, Dryer, Hood Fan, Refrigerator, Stove-Electric, Washer
Heating	Forced Air-1, Natural Gas
# of Stories	2
Stories	1
Has Basement	Yes
Basement	None, No Basement

Exterior

Exterior	Wood, Vinyl
Exterior Features	Back Lane, Low Maintenance Landscape, Park/Reserve, Playground Nearby, Public Transportation, Schools, Shopping Nearby
Roof	Asphalt Shingles
Construction	Wood, Vinyl

Foundation Concrete Perimeter

School Information

Elementary Linsford Park School

Middle Riverview River School

High Leduc Composite High

Additional Information

Date Listed March 6th, 2025

Days on Market 37

Zoning Zone 81

Condo Fee \$345

DATA IS DEEMED RELIABLE BUT IS NOT GUARANTEED ACCURATE BY THE REALTORS® ASSOCIATION OF EDMONTON. COPYRIGHT 2025 BY THE REALTORS® ASSOCIATION OF EDMONTON. ALL RIGHTS RESERVED. Trademarks are owned or controlled by the Canadian Real Estate Association (CREA) and identify real estate professionals who are members of CREA (REALTOR®, REALTORS®) and/or the quality of services they provide (MLS®, Multiple Listing Service®)

Listing information last updated on April 12th, 2025 at 7:02pm MDT