

\$359,900 - 511 10728 82 Avenue, Edmonton

MLS® #E4423802

\$359,900

2 Bedroom, 1.50 Bathroom, 1,127 sqft

Condo / Townhouse on 0.00 Acres

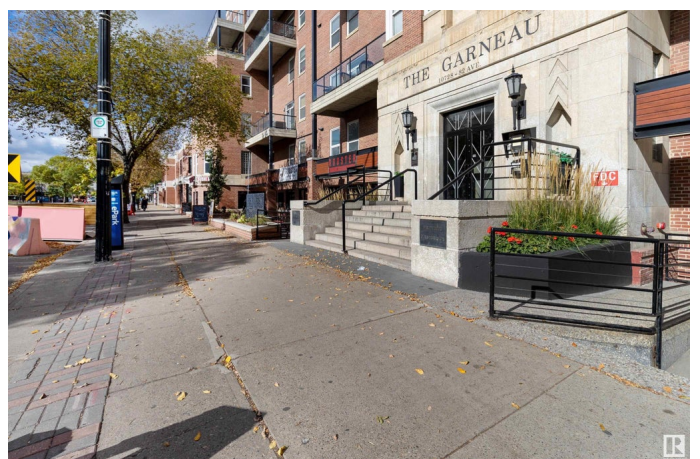
Garneau, Edmonton, AB

This stunning two-level penthouse in the iconic "The Garneau" offers a blend of luxury and style in the heart of Whyte Avenue. Recently upgraded, the unit features plush carpets, elegant hardwood flooring, a spacious island kitchen with quartz countertops, and high-end appliances. The main area boasts exposed brick walls and a gas fireplace, perfect for relaxing or entertaining. A curved staircase leads to the loft, where you'll find two bedrooms and a four-piece bathroom. Enjoy two south-facing balconies with panoramic views of Whyte Avenue. The unit includes two titled underground parking stalls, and the building itself features a gorgeous retro-style lobby. Located steps away from restaurants, entertainment, and the University of Alberta, this penthouse offers convenience and vibrant urban living at its best.

Built in 1948

Essential Information

| | |
|----------------|-----------|
| MLS® # | E4423802 |
| Price | \$359,900 |
| Bedrooms | 2 |
| Bathrooms | 1.50 |
| Full Baths | 1 |
| Half Baths | 1 |
| Square Footage | 1,127 |



| | |
|------------|-----------------------|
| Acres | 0.00 |
| Year Built | 1948 |
| Type | Condo / Townhouse |
| Sub-Type | Lowrise Apartment |
| Style | Multi Level Apartment |
| Status | Active |

Community Information

| | |
|-------------|---------------------|
| Address | 511 10728 82 Avenue |
| Area | Edmonton |
| Subdivision | Garneau |
| City | Edmonton |
| County | ALBERTA |
| Province | AB |
| Postal Code | T6E 6P5 |

Amenities

| | |
|----------------|-------------|
| Amenities | Deck |
| Parking Spaces | 2 |
| Parking | Underground |

Interior

| | |
|-------------------|---|
| Interior Features | ensuite bathroom |
| Appliances | Dishwasher-Built-In, Dryer, Oven-Built-In, Oven-Microwave, Refrigerator, Stove-Electric, Washer |
| Heating | Forced Air-1, Natural Gas |
| # of Stories | 5 |
| Stories | 5 |
| Has Basement | Yes |
| Basement | None, No Basement |

Exterior

| | |
|-------------------|----------------------------|
| Exterior | Brick, Stucco |
| Exterior Features | Shopping Nearby, View City |
| Roof | Tar & Gravel |
| Construction | Brick, Stucco |
| Foundation | Concrete Perimeter |

Additional Information

| | |
|----------------|-----------------|
| Date Listed | March 4th, 2025 |
| Days on Market | 38 |
| Zoning | Zone 15 |
| Condo Fee | \$675 |

DATA IS DEEMED RELIABLE BUT IS NOT GUARANTEED ACCURATE BY THE REALTORS® ASSOCIATION OF EDMONTON. COPYRIGHT 2025 BY THE REALTORS® ASSOCIATION OF EDMONTON. ALL RIGHTS RESERVED. Trademarks are owned or controlled by the Canadian Real Estate Association (CREA) and identify real estate professionals who are members of CREA (REALTOR®, REALTORS®) and/or the quality of services they provide (MLS®, Multiple Listing Service®)

Listing information last updated on April 11th, 2025 at 2:32pm MDT