

# \$888,888 - 880 Ebbers Crescent, Edmonton

MLS® #E4422524

**\$888,888**

6 Bedroom, 4.00 Bathroom, 2,510 sqft  
Single Family on 0.00 Acres

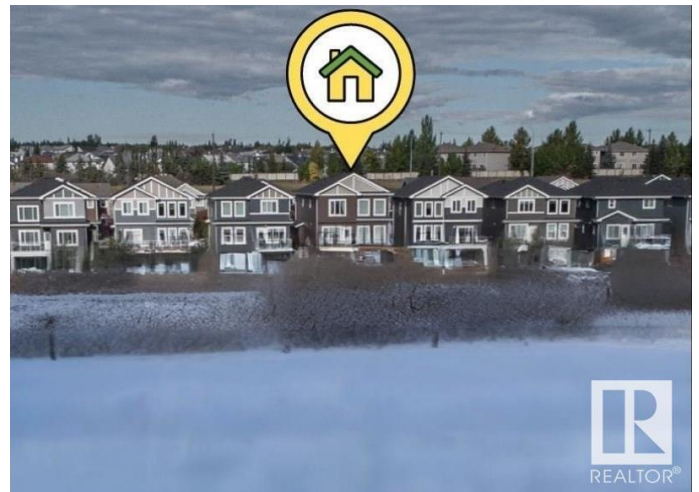
Ebbers, Edmonton, AB

Experience the perfect fusion of luxury and investment potential in this stunning 2,500 sq ft, 7-bedroom two-storey home, backing onto a breathtaking live pond. The walkout basement boasts a fully legal 2-bedroom suite with a private entrance, modern finishes, and a functional layout—an exceptional opportunity to generate rental income or offset mortgage costs. Nature is your backdrop, with serene water views framed by expansive picture windows, seamlessly blending upscale living with financial savvy. The main floor features a dazzling chef’s kitchen with high-end built-ins, a walk-through pantry & opulent gold accents. Upstairs, the hotel-like master suite, stylish loft & upper-level laundry add sophistication & convenience. High-end architectural details elevate the elegance throughout. Whether you're investing in your future or indulging in refined living, this home offers both wealth-building potential and an unmatched connection to nature. Whatever stage your family is at, this home is for you! WOW!

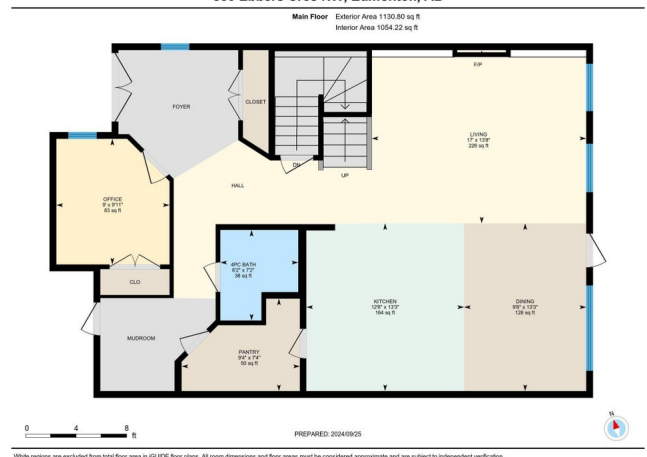
Built in 2021

## Essential Information

MLS® # E4422524  
Price \$888,888



880 Ebbers Cres NW, Edmonton, AB



White regions are excluded from total floor area in iGUIDE floor plans. All room dimensions and floor areas must be considered approximate and are subject to independent verification.

Bedrooms	6
Bathrooms	4.00
Full Baths	4
Square Footage	2,510
Acres	0.00
Year Built	2021
Type	Single Family
Sub-Type	Detached Single Family
Style	2 Storey
Status	Active

### **Community Information**

Address	880 Ebbers Crescent
Area	Edmonton
Subdivision	Ebbers
City	Edmonton
County	ALBERTA
Province	AB
Postal Code	T5Y 3V1

### **Amenities**

Amenities	Ceiling 9 ft., Deck, Exterior Walls- 2"x6", Gazebo, No Smoking Home, Patio, Smart/Program. Thermostat, Vinyl Windows, Walkout Basement, 9 ft. Basement Ceiling
Parking Spaces	4
Parking	Double Garage Attached, Insulated, Over Sized
Is Waterfront	Yes

### **Interior**

Interior Features	ensuite bathroom
Appliances	Dishwasher-Built-In, Garage Control, Garage Opener, Hood Fan, Oven-Built-In, Oven-Microwave, Stove-Countertop Gas, Stove-Electric, Window Coverings, Dryer-Two, Refrigerators-Two, Washers-Two
Heating	Forced Air-2, Natural Gas
Fireplace	Yes
Fireplaces	Heatilator/Fan
Stories	3
Has Basement	Yes
Basement	Full, Finished

## Exterior

Exterior	Wood, Vinyl
Exterior Features	Backs Onto Lake, Fenced, Landscaped, Park/Reserve, Playground Nearby, Public Transportation, Shopping Nearby
Roof	Asphalt Shingles
Construction	Wood, Vinyl
Foundation	Concrete Perimeter

## Additional Information

Date Listed	February 21st, 2025
Days on Market	50
Zoning	Zone 02

DATA IS DEEMED RELIABLE BUT IS NOT GUARANTEED ACCURATE BY THE REALTORS® ASSOCIATION OF EDMONTON. COPYRIGHT 2025 BY THE REALTORS® ASSOCIATION OF EDMONTON. ALL RIGHTS RESERVED. Trademarks are owned or controlled by the Canadian Real Estate Association (CREA) and identify real estate professionals who are members of CREA (REALTOR®, REALTORS®) and/or the quality of services they provide (MLS®, Multiple Listing Service®)

Listing information last updated on April 12th, 2025 at 12:32am MDT