

Courtesy Of Diane L Thomas Of RE/MAX Excellence

\$849,000 - 10503 135 Street, Edmonton

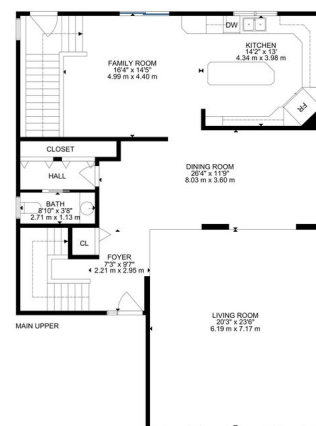
MLS® #E4417135

\$849,000

3 Bedroom, 3.50 Bathroom, 2,939 sqft
Single Family on 0.00 Acres

Glenora, Edmonton, AB

This charming home is perfect for both entertaining and family living, with plenty of great features throughout. *a VAULTED ceiling in the living room with cathedral like windows *HARDWOOD floors throughout most of the main floor *white kitchen with a large ISLAND, family room area and patio doors leading out to 2-tiered DECK *a downstairs REC room with a wet bar, large windows, underfloor heating, a spacious bathroom, tons of STORAGE and access to the garage, with a HEATED DRIVEWAY! * Upstairs, you'll find generously sized bedrooms, large bathrooms, and a roomy laundry area. With 3,960 square feet of living space on a 6,994-square-foot lot, this home offers plenty of space for everyone. Located in the vibrant GLENORA neighbourhood, 3 schools close by, tennis, pickleball, basketball and a new RINK at the community league just a block away. This is a great place to live and raise a family! Don't miss this opportunity!



GROSS INTERNAL AREA
BASEMENT: 95 SF, 1022 SQ FT, MAIN LEVEL: 150 SF, 1614 SQ FT, MAIN LEVEL: 123 SF, 1323 SQ FT
EXCLUDED AREAS: GARAGE: 44 SF, 471 SQ FT
TOTAL: 388 SF, 396 SQ FT
SIZE AND DIMENSIONS ARE APPROXIMATE, ACTUAL MAY VARY

Built in 1949

Essential Information

MLS® #	E4417135
Price	\$849,000
Bedrooms	3
Bathrooms	3.50

Full Baths	3
Half Baths	1
Square Footage	2,939
Acres	0.00
Year Built	1949
Type	Single Family
Sub-Type	Detached Single Family
Style	2 Storey
Status	Active

Community Information

Address	10503 135 Street
Area	Edmonton
Subdivision	Glenora
City	Edmonton
County	ALBERTA
Province	AB
Postal Code	T5N 2C8

Amenities

Amenities	Deck, Front Porch, Vaulted Ceiling
Parking	Double Garage Attached

Interior

Interior Features	ensuite bathroom
Appliances	Dishwasher-Built-In, Dryer, Garage Control, Garage Opener, Refrigerator, Stove-Electric, Washer, Window Coverings
Heating	Forced Air-1, Hot Water, Natural Gas
Fireplace	Yes
Fireplaces	Mantel
Stories	3
Has Basement	Yes
Basement	Full, Finished

Exterior

Exterior	Wood, Vinyl
Exterior Features	Corner Lot, Fenced, Paved Lane, Playground Nearby, Public Transportation, Schools
Roof	Asphalt Shingles

Construction	Wood, Vinyl
Foundation	Concrete Perimeter

School Information

Elementary	Glenora, St Vincent
Middle	Westminster
High	Ross Shep, Mac

Additional Information

Date Listed	January 6th, 2025
Days on Market	95
Zoning	Zone 11

DATA IS DEEMED RELIABLE BUT IS NOT GUARANTEED ACCURATE BY THE REALTORS® ASSOCIATION OF EDMONTON. COPYRIGHT 2025 BY THE REALTORS® ASSOCIATION OF EDMONTON. ALL RIGHTS RESERVED. Trademarks are owned or controlled by the Canadian Real Estate Association (CREA) and identify real estate professionals who are members of CREA (REALTOR®, REALTORS®) and/or the quality of services they provide (MLS®, Multiple Listing Service®)

Listing information last updated on April 11th, 2025 at 2:18pm MDT